

[Jump to Website](#)

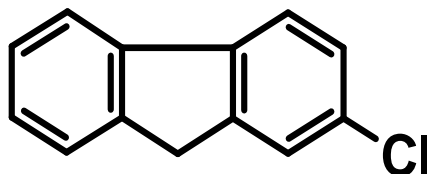
[Request Quote](#)

## Product Specifications

### 2-Chlorofluorene

CAS 2523-44-6

Structure:



Mol. Formula  
Source

$C_{13}H_9Cl$   
Synthetic

Mol. Wt.

200.67

<i>Test</i>	<i>Specification</i>
Appearance	White crystal
Mp	96-97 °C
LOD	< 1%
Ash (residue on ignition)	< 0.2%
Assay	≥ 98%
Heavy metals	< 10 ppm

*Storage:* Maintain in cool, dry containment.