

[Jump to Website](#)

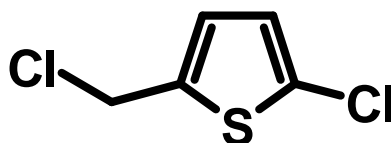
[Request Quote](#)

Product Specifications

2-Chloro-5-chloromethylthiophene

CAS 23784-96-5

Structure:



Mol. Formula
Source

$C_5H_4Cl_2S$
Synthetic

Mol. Wt.

167.06

<i>Test</i>	<i>Specification</i>
-------------	----------------------

Identity

Infrared

Appearance

Clear, colorless to pale yellow liquid

Bp

83-85 °C / 8 mm Hg (Lit.)

Assay (glpc)

> 98 %

d_{25}^{20}

1.385 g / mL (Lit.)

RI, η_D^{20}

1.575 (Lit.)

Fp

213 °F

Storage: Maintain in cool, dry containment.

Caution: Strong lachrymator !