

[Jump to Website](#)

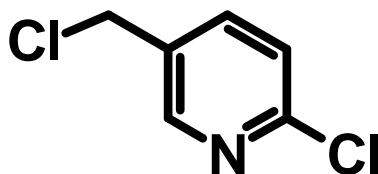
[Request Quote](#)

Product Specifications

2-Chloro-5-(chloromethyl)pyridine

CAS 70258-18-3

Structure:



Mol. Formula
Source

$C_6H_5Cl_2N$
Synthetic

Mol. Wt.

162.02

<i>Test</i>	<i>Specification</i>
Identity	IR
Appearance	White to off-white cast solid
Bp	249 °C / 760 mm Hg (Lit.)
Mp	37-42 °C (Lit.)
Assay	> 98% min.
Ash (residue on ignition)	< 0.2 %
Heavy metals	< 10 ppm
Fp	> 230 °F

Storage: Maintain in cool, dry containment.

Caution: Strong lachrymator!