

[Jump to Website](#)

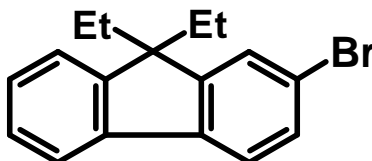
[Request Quote](#)

Product Specifications

2-Bromo-9,9-diethylfluorene

CAS 287493-15-6

Structure:



Mol. Formula
Source

$C_{17}H_{17}Br$
Synthetic

Mol. Wt.

301.23

<i>Test</i>	<i>Specification</i>
Appearance	Off-white powder
Assay (hplc)	≥ 98%
LOD	< 1%
Ash (residue on ignition)	< 0.2%
Heavy metals	< 10 ppm

Storage: Maintain in cool, dry containment.