

[Jump to Website](#)

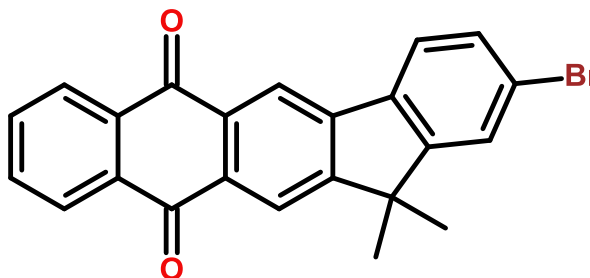
[Request Quote](#)

Product Specifications

2-Bromo-13,13-dimethyl-6H-indeno[1,2-b]anthracene-6,11(13H)-dione

CAS 1196107-73-9

Structure:



Mol. Formula
Source

C₂₃H₁₅BrO₂
Synthetic

Mol. Wt.

403.27

<i>Test</i>	<i>Specification</i>
Identity	IR
Appearance	White microcrystalline solid
Purity (hplc)	≥ 99%
LOD	≤ 1%
Ash (residue on ignition)	≤ 0.2%
Heavy metals	≤ 10ppm

Storage: Maintain in cool, dry containment.