

[Jump to Website](#)

[Request Quote](#)

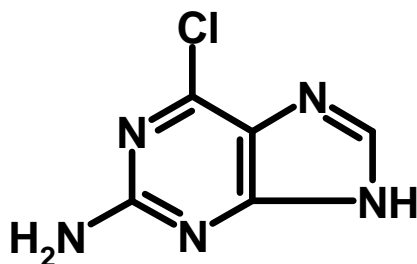
Product Specifications

2-Amino-6-chloropurine

CAS 10310-21-1

Syn: 6-Chloro-1H-purin-2-amine; 6-Chloro-2-aminopurine;
6-Chloro-2-purinamine; 6-Chloro-7H-purin-2-ylamine; 6-Chloroguanine

Structure:



Mol. Formula
Source

C₅H₄ClN₅
Synthetic

Mol. Wt.

169.57

<i>Test</i>	<i>Specification</i>
-------------	----------------------

Appearance	White crystalline solid
Mp	~ 275 °C
Assay (hplc)	> 98 %
TLC	Single Spot
LOD	< 0.5%
Ash (residue on ignition)	< 0.1%
Heavy metals	< 2 ppm (Pb) < 1 ppm (As)

Storage: Maintain in cool, dry containment.