

[Jump to Website](#)

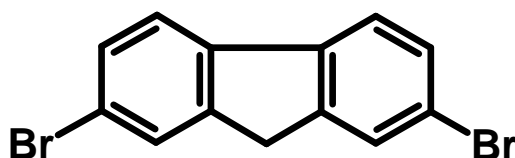
[Request Quote](#)

Product Specifications

2,7-Dibromofluorene

CAS 16433-88-8

Structure:



Mol. Formula
Source

$C_{13}H_8Br_2$
Synthetic

Mol. Wt.

324.02

<i>Test</i>	<i>Specification</i>
Appearance	White crystalline solid
Mp	157-159 °C
Assay (hplc)	≥ 99%
LOD	< 0.5%
Ash	< 0.2%
Heavy metals	< 10 ppm

Storage: Maintain in cool, dry containment.