

[Jump to Website](#)

[Request Quote](#)

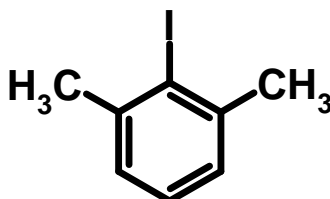
Product Specifications

2,6-Dimethylphenyl Iodide

CAS 608-28-6

Syn: 2,6-Dimethyliodobenzene; 2-Iodo-1,3-dimethylbenzene

Structure:



Mol. Formula
Source

C₈H₉I
Synthetic

Mol. Wt.

232.06

<i>Test</i>	<i>Specification</i>
Identity	IR, H-NMR
Appearance	Colorless to pale-yellow liquid
Bp	100-102 °C @ 12 mm Hg
Mp	10-12 °C (Lit.)
Assay	98% min.
Water Content	< 0.5%
$d_{20}^{\circ\text{C}}$	1.710 g/m
RI, $\eta_D^{20}^{\circ\text{C}}$	1.600
Fp	> 200 °F

Storage: Maintain in cool, dry containment.