

[Jump to Website](#)

[Request Quote](#)

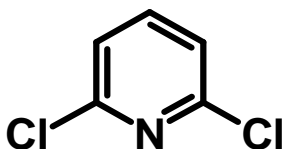
Product Specifications

2,6-Dichloropyridine

CAS 2402-78-0

EG/EC 2192823

Structure:



Mol. Formula
Source

$C_5H_3Cl_2N$
Synthetic

Mol. Wt.

147.99

<i>Test</i>	<i>Specification</i>
Identity	Raman
Appearance	Crystalline white to off-white solid
Mp	83-86 °C (Lit.)
Assay (glpc)	> 99%
Titration	97.5% - 102.5% (w/ AgNO ₃ after combustion)
Moisture	< 0.5%
2-Chloropyridine	0.8% max.

Packaging: 20 Kg. minimum; outer drum fiber.

Transport: UN 2811 6.1/PG 2 is classified as a TOXIC substance and subject to the appropriate shipping restrictions. TSCA listed.

Storage: Maintain in cool, dry containment.