

[Jump to Website](#)

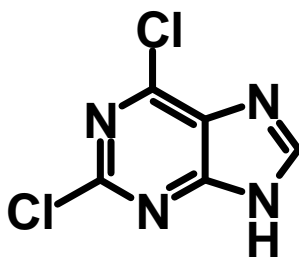
[Request Quote](#)

## Product Specifications

### 2,6-Dichloropurine

CAS 5451-40-1

Structure:



Mol. Formula  
Source

$C_5H_4Cl_2N_4$   
Synthetic

Mol. Wt.

167.06

<i>Test</i>	<i>Specification</i>
Identity	IR
Appearance	White to off-white powder
Mp	185.5 (dec) [Lit.]
Assay (hplc)	> 98 %
LOD	< 0.5 %
Ash (residue on ignition)	< 0.2 %
Heavy metals	< 10 ppm

*Storage:* Maintain in cool, dry containment.