

[Jump to Website](#)

[Request Quote](#)

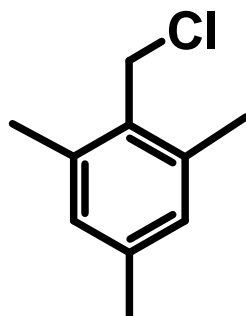
Product Specifications

2,4,6-Trimethylbenzyl Chloride

CAS 1585-16-6

Syn: (Chloromethyl)mesitylene; α -Chloroisodurene; α -2-Chloroiso-durene; 1,3,5-Trimethyl-2-(chloromethyl)benzene; 1-Chloromethyl-2,4,6-trimethylbenzene; Mesitylmethyl Chloride

Structure:



Mol. Formula
Source

C₁₀H₁₃Cl
Synthetic

Mol. Wt.

168.66

Test

Specification

Identity	IR
Appearance	Off-white cast solid or powder
Bp	244°C / 760 mm Hg [Lit.]
Mp	34-38 °C [Lit.]
Assay (glpc)	> 98 %
Ash (residue on ignition)	< 0.2%
d₂₀^{°C}	1.016 g/mL
Fp	106 °C

Storage: Maintain in cool, dry containment.