

[Jump to Website](#)

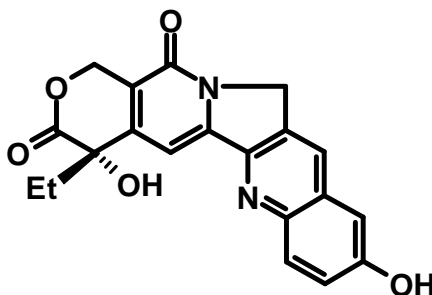
[Request Quote](#)

Product Specifications

10-Hydroxycamptothecin

CAS 19685-09-7

Structure:



Mol. Formula
Source

$C_{20}H_{16}N_2O_5$
Synthetic

Mol. Wt.

364.35

<i>Test</i>	<i>Specification</i>
Appearance	Light yellow powder (sensitive to light)
Solubility (5 mg / 5 mL of 4% NaOH)	Clear solution
Mp	267-268 °C
Assay (hplc)	Three grades: 80-85.0 %; > 95%; > 98%
Sp. Rot., $[\alpha]_D$	> 34° (> 98%), (c = 0.11 g; CH ₂ Cl ₂ , MeOH)
LOD	< 3.0%
Ash (residue on ignition)	< 0.2%
Heavy metals	< 10 ppm

Storage: This product is light sensitive! Handle and store accordingly.