

[Jump to Website](#)

[Request Quote](#)

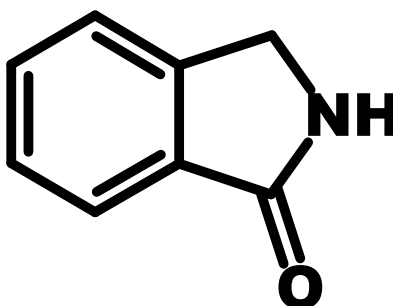
Product Specifications

1-Isoindolinone

CAS 480-91-1

Syn: 2,3-Dihydro-1H-isoindole-1-one

Structure:



Mol. Formula
Source

C_8H_7NO
Synthetic

Mol. Wt.

133.15

<i>Test</i>	<i>Specification</i>
Identity	IR
Appearance	White microcryst. powder
Mp	155-157 °C (lit.)
Assay (glpc)	> 98%
LOD	< 1%
Ash (residue on ignition)	< 0.2%
Heavy Metals	< 20 ppm

Storage: Maintain in cool, dry containment.