

[Jump to Website](#)

[Request Quote](#)

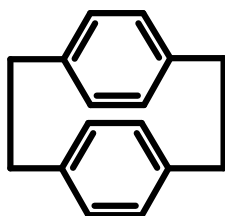
## Product Specifications

### [2.2]Paracyclophane

CAS 1633-22-3

Syn: Tricyclo[8.2.2.2<sup>4,7</sup>]hexadeca-4,6,10,12,13,15-hexaene

Structure:



Mol. Formula  
Source

C<sub>16</sub>H<sub>16</sub>  
Synthetic

Mol. Wt.

208.30

<i>Test</i>	<i>Specification</i>
Identity	IR
Appearance	White microcryst. powder
Mp	284-286 °C
Assay (hplc)	≥ 99 %
LOD	< 0.5 %
Ash (residue on ignition)	< 0.1 %
Heavy Metals	< 10 ppm

*Storage:* Maintain in cool, dry containment.